

Instructions for building a Leader Fox kids bike

Welcome to the Leader Fox family. Just a few steps away from enjoying the full feeling of riding your new bike. Building a bike is not magic, but you should proceed with care and consideration. Together we can do it. Our colleagues have made sure that you have as little work as possible with the assembly. Let's do it.

Opening the box and checking the contents

First, use a suitable knife and open the top lid of the box.

Picture 1 - Opening the box



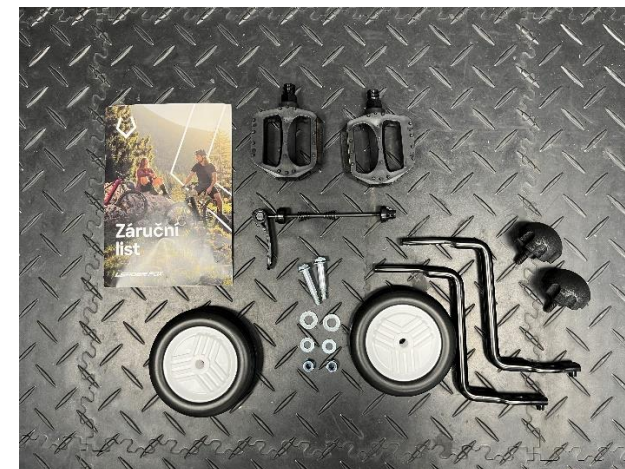
After opening the box, check the contents. The package contains the assembled frame set with the rear wheel and all additional components fitted, the front wheel, saddle with seat post and handlebars, which are connected to the frame set by hoses and cables. The package also includes other small parts (e.g. front wheel quick release, pedals, additional wheels).

Picture 2 – Packaged frame set



LEADER FOX

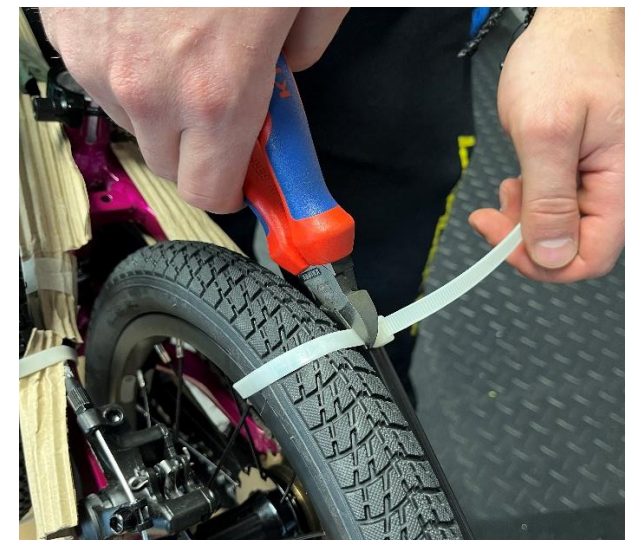
Picture 3 - Bicycle accessories



Assembly of the saddle

After removing the bike from the box, remove the tightening tape and release the saddle.

Picture 4 – Loosening the saddle



Apply a small amount of suitable lubricant to the bottom of the seat post. Then slide the seat post into the seat tube and secure with a quick release.

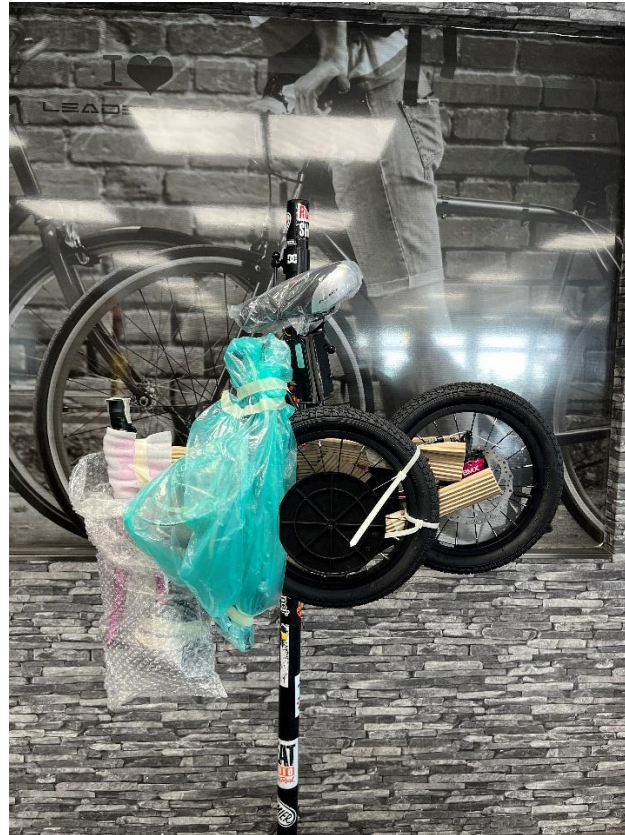
Picture 5 – Inserting the seat post into the seat tube



After mounting the saddle to the frame, use the mounting stand and clamp the bike to the stand by the seat post. If a mounting stand is not available, ensure that the bike is placed in the mounting position to prevent it from falling off

and to ensure that the remaining mounting is safe and comfortable for you.

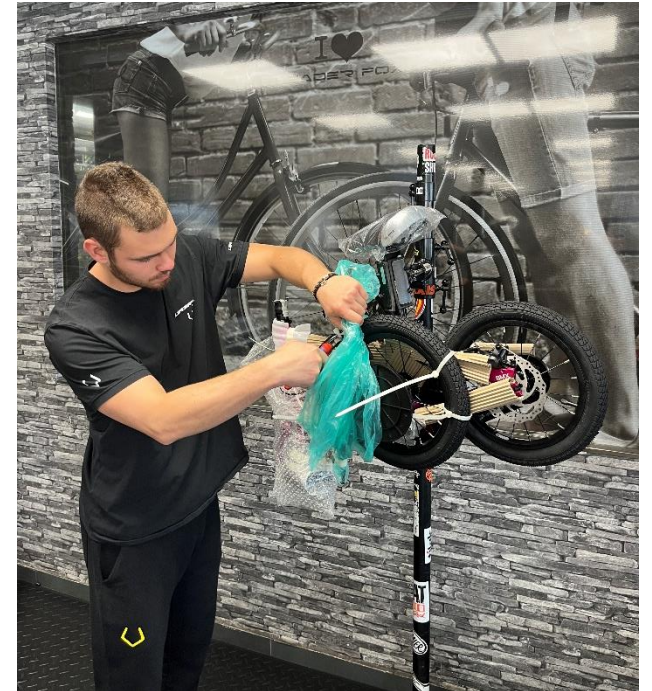
Picture 6 – Wheel clamped on mounting rack



Next, remove all packing material from the frame and the ties securing the other components to the frame. When removing the tie straps in particular, take care to ensure

that the loosening does not cause a component to fall and damage it.

Picture 7 - Removing packaging material



After releasing the front wheel, remove the protective plastic cap that is inserted in the wheel axle.

Picture 8 - Ochranná krytka předního kola



Mounting the handlebars

The handlebars are completely ready to be mounted on the fork post. The stem is already mounted on the handlebars. The handlebars are connected to the rest of the frame with hoses and cables. These are the front and rear brake

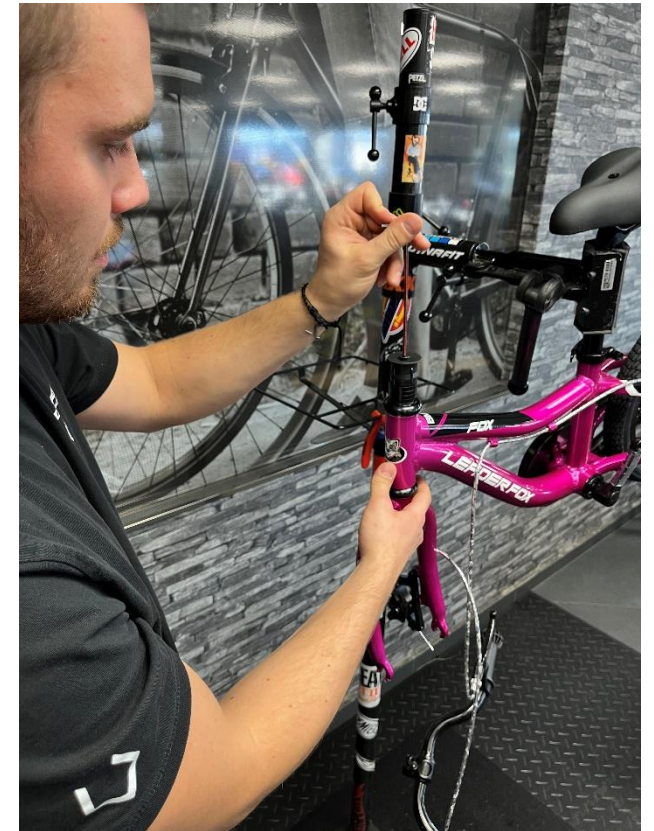
cables. Completely remove the wraps from the handlebars and let them hang freely on the cables.

Picture 9 - Unpacking the handlebars



Use a wrench to remove the plastic lock that is located on the fork post. The lock is used to keep the fork firmly attached to the frame and prevent it from falling out and being damaged during transport. When removing this plastic lock, keep the fork inserted in the head tube of the frame to prevent it from falling out and being damaged. You will then need the bolt that secures the plastic fork lock for mounting the stem and handlebars.

Picture 10 - Disassembling the fork lock



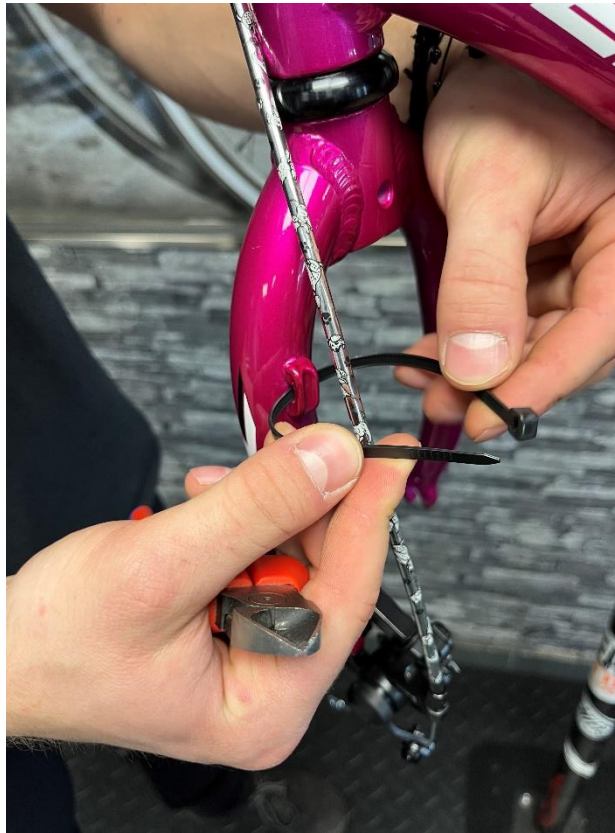
Then grab the dropped handlebars and place the pre-installed stem on the fork post. Immediately secure the stem with the screw you unscrewed in the previous step. While placing the handlebars and stem on the fork post, make sure that the brake cables are not twisted and that they lead to the frame and fork in a single curve. Then align the handlebars and carefully tighten all the bolts in the stem.

Picture 11 - Assembly of handlebars with stem



Attach the front brake cable to the fork with the tie strap.

Picture 12 - Front brake cable attachment



Front wheel assembly

Before mounting the front wheel, first prepare the quick-release axle by first removing the lock nut from the axle and removing one of the springs from the axle.

Picture 13 – Front wheel quick-release axle



Push the axle into the front wheel hub. There must be one spring on each side of the hub. Ensure that the smaller diameter part of the spring is centred towards the hub axis.

Picture 14 - Quick-release axle inserted in the front wheel hub



Fit the front wheel to the fork and make sure the brake disc is seated between the brake pads. Tighten and secure the quick release to ensure the wheel is securely fixed to the fork. Then pull the front brake lever several times and

release. Spin the front wheel and check the brake for proper operation.

Picture 15 - Assembled front wheel



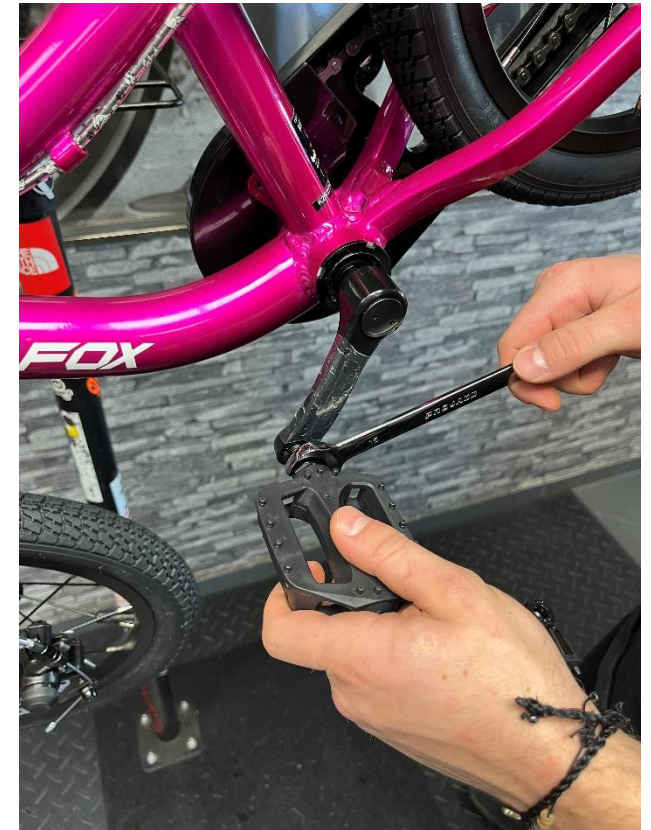
Assembly of pedals

When fitting the pedals, it is first necessary to correctly identify the left and right pedals. Remember that the left pedal has a left-hand thread, i.e. in the opposite direction

to the normal thread. Therefore, the two pedals cannot be interchanged.

Apply grease to the threads of the pedals. First screw both pedals into the crank thread by hand two to three turns before tightening them firmly with a flat wrench.

Picture 16 - Assembly of pedals



Assembly of other parts

Assembling additional wheels

For our youngest customers, we have also produced additional wheels for the children's bikes to make the beginning of cycling as pleasant and safe as possible for young riders. Together we will now start assembling them and attaching them to the frame.

First of all, prepare all the parts of the add-on wheel assembly. These are two pieces of aluminium Z-shaped construction, two wheels and fasteners.

First attach the aluminium structure for the additional wheels to the frame. Use the plastic-headed screw as shown to attach to the frame. Attach the aluminium

structure to the frame using the holes provided. Tighten the plastic head screw by hand.

Picture 17 - Assembly of the construction of the additional wheels



Next, slide the screw into the wheel. Make sure that the screw is fitted with washers. The larger diameter washer is placed between the screw head and the wheel. The smaller

diameter washer is placed between the wheel and the aluminium structure.

Picture 13 - Screw for fixing the wheel to the structure



Then insert the prepared screw into one of the holes on the underside of the structure. The holes on the underside of the structure are used to adjust the height of the auxiliary wheels relative to the axis of the rear wheel. In other words, by changing the position of the auxiliary wheels you can adjust the tilt of the wheel and its stability during the ride.

Lastly, use a pair of flat wrenches to secure the nut of the auxiliary wheel bolt. After tightening the nut and bolt, check the correct rotation of the additional wheel.

Picture 14 - Securing the nut of the additional wheel



Then repeat the same procedure on the other side of the round.

Check and adjustment

In the last step, perform the necessary check of the Whole Wheel. Remember that the wheel is a mechanical affair with disassembled joints and many moving parts. In case of loosening of some joints, injury may occur.

So before each ride, check that all joints are tightened and that each component is functional. In particular, look for tight bolted joints in the stem, seat tube, cranks, pedals and rear structure. Check that the front and rear wheels are firmly attached and that the brakes are working properly.

See, it was a piece of cake. Your bike is now ready to go. We at Leader Fox hope that every ride brings you new adventures, freedom and the joy of movement.

For the Leader Fox team

Libor